



South Australia 2007 figures

number of cases	105
number of deaths	64
incidence/100,000 (ASR* Aust 2001 population)	10.8
mortality/100,000 (ASR* Aust 2001 population)	6.3
risk of developing cancer (by age 75 years)	1 in 121

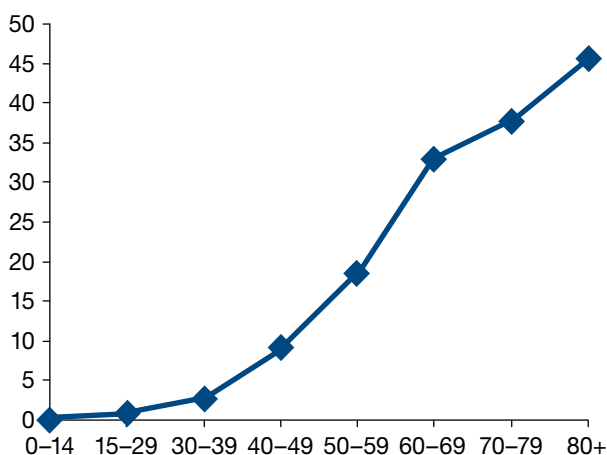
*ASR – Age Standardised Rate

Patterns in incidence and mortality

Age

Ovarian cancer is rare in women under the age of 40 years, but increases steadily from this age onwards, with the highest rates occurring among women aged 80 years and older.

Age specific ovary incidence (annual average rate/100,000, SA 1998–2007)



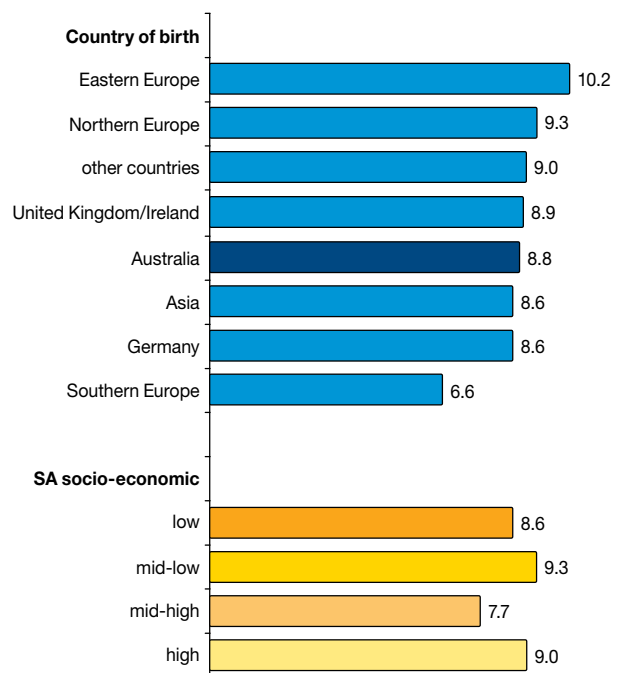
Country of birth

Within South Australia, there was little variation in incidence by country of birth during 1977–2000, although women born in Southern Europe had a rate about three quarters that of the Australian born.

SES/region

Socio-economic differences were not evident by residential location in South Australia during 1977–2001, in that they were within the range attributable to chance.

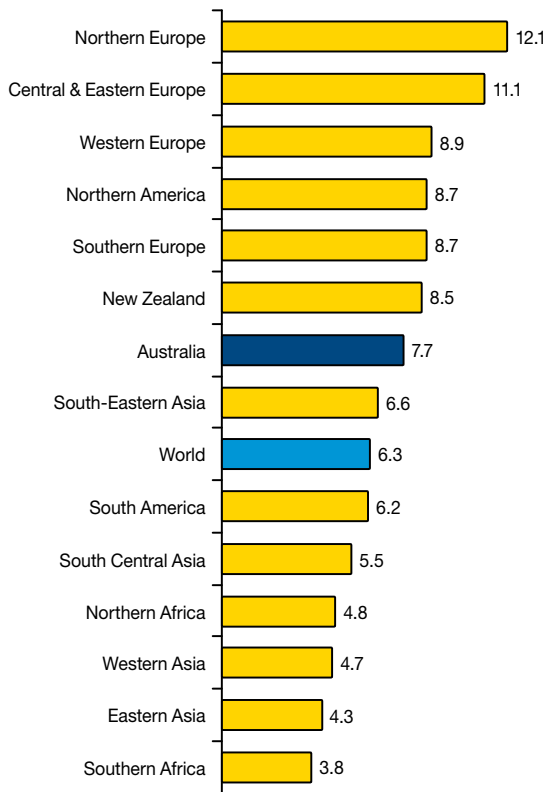
Ovary incidence by country of birth and SES (annual rate/100,000, 1977–2001, ASR World population)



Global comparisons

The incidence of ovarian cancer in Australia as a whole is lower than in many other developed regions of the world, but is higher than most other developing regions. There is a threefold difference in the incidence of ovarian cancer across different regions of the world.

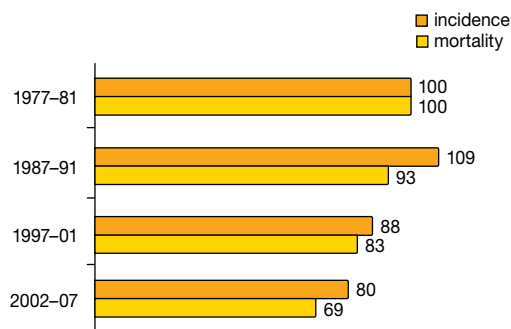
Ovarian cancer incidence by regions of the world (rate/100,000 ASR World population, Globocan 2008)



Trends

Trend data suggest that both incidence and mortality rates among South Australian women have declined over the past two decades, in the case of incidence by 20% and for mortality by 30%.

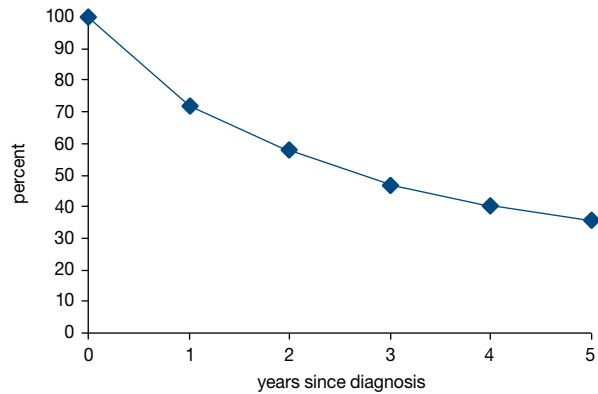
Trends in ovary incidence and mortality in SA (rates for 1977–81 set at '100')



Survival

Survival rates for ovarian cancer are relatively poor and have not improved substantially over the last two decades. Approximately 36% of women diagnosed with ovarian cancer between 1997 and 2003 survived their cancer for five or more years. This compares with a five year survival of 35% for women diagnosed between 1977–1981. Poor survival outcomes are due largely to difficulty in diagnosing ovarian cancer at an early stage.

Survival from ovary cases diagnosed in SA, 1997–2003



Risk factors

Risk factors include:

- a history of no or few pregnancies
- a long duration from commencement of menstruation to menopause
- a familial disposition.

By comparison, protective factors include the use of contraceptive steroids, tubal ligation, and a hysterectomy.

Data sources:

- Cancer Registry reports, South Australian Department of Health
- Globocan 2008, IARC.

September 2010
next review due September 2011